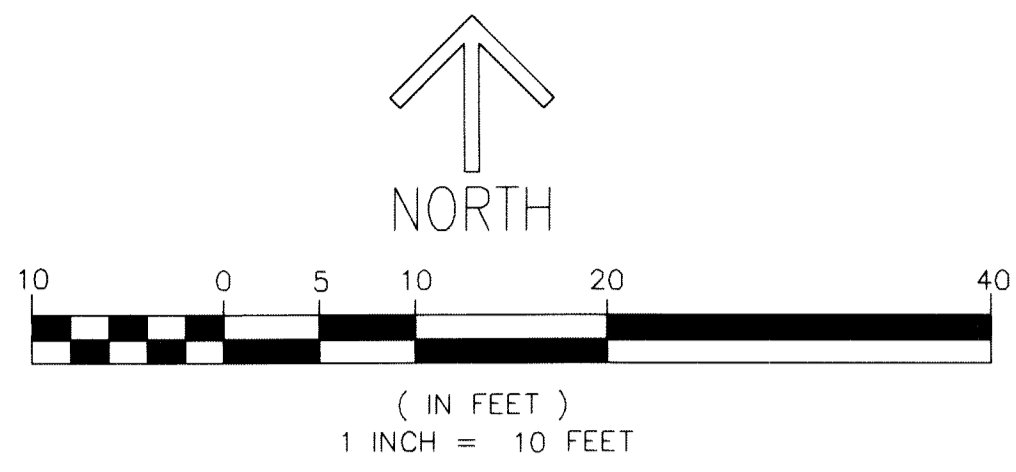


1236 GEORGE BUSH BLVD

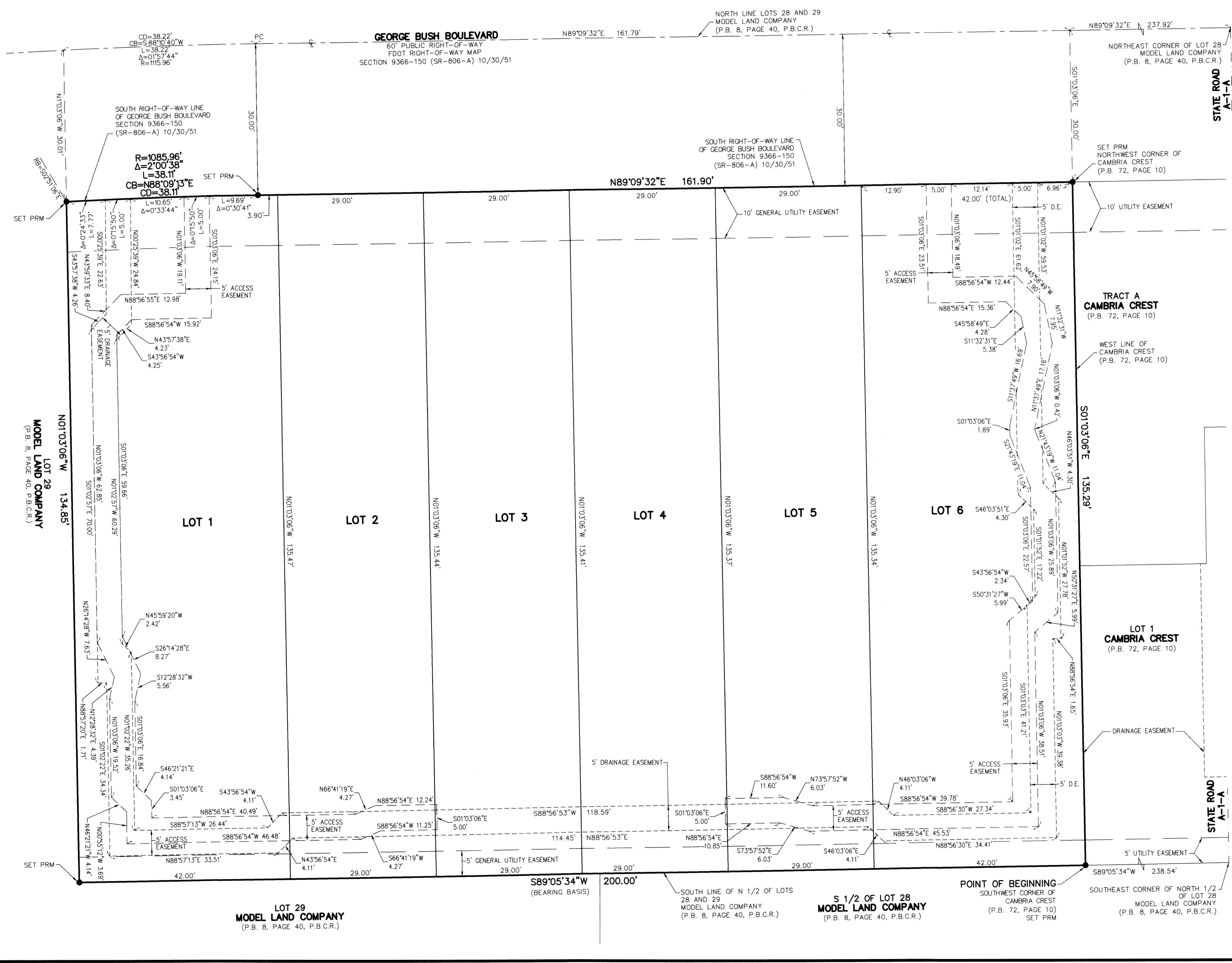
BEING A REPLAT OF A PORTION OF LOTS 28 AND 29, MODEL LAND COMPANY AS RECORDED IN PLAT BOOK 8, PAGE 40 OF THE PUBLIC RECORDS OF PALM BEACH COUNTY, FLORIDA, LYING IN SECTION 9, TOWNSHIP 46 SOUTH, RANGE 43 EAST, CITY OF DELRAY BEACH (FORMERLY THE TOWN OF LINTON, FLORIDA), PALM BEACH COUNTY, FLORIDA.

THIS INSTRUMENT PREPARED BY
DAVID P. LINDLEY

OF
CAULFIELD & WHEELER, INC.
SURVEYORS - ENGINEERS - PLANNERS
7900 GLADES ROAD, SUITE 100
BOCA RATON, FLORIDA 33434 - (561)392-1991
CERTIFICATE OF AUTHORIZATION NO. LB3591



100
SHEET 2 OF 2



"NOTICE" THIS PLAT, AS RECORDED IN ITS GRAPHIC FORM, IS THE OFFICIAL DEPICTION OF THE SUBDIVIDED LANDS DESCRIBED HEREIN AND WILL IN NO CIRCUMSTANCES BE SUPPLANTED IN AUTHORITY BY ANY OTHER GRAPHIC OR DIGITAL FORM OF THE PLAT. THERE MAY BE ADDITIONAL RESTRICTIONS THAT ARE NOT RECORDED ON THIS PLAT THAT MAY BE FOUND IN THE PUBLIC RECORDS OF PALM BEACH COUNTY.

SURVEY NOTES:

1. IN THOSE CASES WHERE EASEMENTS OF DIFFERENT TYPES CROSS OR OTHERWISE COINCIDE, DRAINAGE EASEMENTS SHALL HAVE FIRST PRIORITY, UTILITY EASEMENTS SHALL HAVE SECOND PRIORITY, ACCESS EASEMENTS SHALL HAVE THIRD PRIORITY, AND ALL OTHER EASEMENTS SHALL BE SUBORDINATE TO THESE WITH THEIR PRIORITIES BEING DETERMINED BY USE RIGHTS GRANTED.
2. BUILDING SETBACK LINES SHALL BE AS REQUIRED BY CURRENT DELRAY BEACH CITY ZONING REGULATIONS.
3. THERE SHALL BE NO TREES OR SHRUBS PLACED ON UTILITY EASEMENTS WHICH ARE PROVIDED FOR WATER AND SEWER USE OR UPON DRAINAGE EASEMENTS. LANDSCAPING ON OTHER UTILITY EASEMENTS SHALL BE ALLOWED ONLY AFTER CONSENT OF ALL THE UTILITY COMPANIES OCCUPYING SAME.
4. THERE MAY BE ADDITIONAL RESTRICTIONS THAT ARE NOT RECORDED ON THIS PLAT THAT MAY BE FOUND IN THE PUBLIC RECORDS OF PALM BEACH COUNTY, FLORIDA.
5. THE CITY OF DELRAY BEACH IS HEREBY GRANTED THE RIGHT OF ACCESS FOR EMERGENCY AND MAINTENANCE PURPOSES.
6. ALL RECORDING REFERENCES ARE RECORDED IN THE PUBLIC RECORDS OF PALM BEACH COUNTY, FLORIDA.
7. BEARINGS SHOWN HEREON ARE RELATIVE TO A GRID BEARING OF S89°05'34"W ALONG THE SOUTH LINE OF N 1/2 OF LOTS 28 AND 29, MODEL LAND COMPANY, ACCORDING TO THE PLAT THEREOF, AS RECORDED IN PLAT BOOK 8, PAGE 40 OF THE PUBLIC RECORDS OF PALM BEACH COUNTY, FLORIDA, RELATIVE TO THE FLORIDA STATE PLANE COORDINATE SYSTEM, EAST ZONE, NORTH AMERICAN DATUM OF 1983 (1990 ADJUSTMENT).
8. ALL DISTANCES SHOWN HEREON ARE GROUND.

LEGEND/ABBREVIATIONS:

- R - RADIUS
- Δ - DELTA (CENTRAL ANGLE)
- L - ARC LENGTH
- LB - LICENSED BUSINESS
- P.B.C.R. - PALM BEACH COUNTY RECORDS
- P.B. - PLAT BOOK
- P.G. - PAGE
- D.E. - DRAINAGE EASEMENT
- ∩ - CENTERLINE
- CB - CHORD BEARING
- CD - CHORD DISTANCE
- RB - RADIAL BEARING
- PC - POINT OF CURVATURE
- FDOT - FLORIDA DEPARTMENT OF TRANSPORTATION
- - DENOTES SET 5/8" IRON ROD AND CAP STAMPED LB#3591
- - DENOTES SET NAIL AND DISK STAMPED "C&W PRM LB#3591"

MODEL LAND COMPANY
LOT 29
(P.B. 8, PAGE 40, P.B.C.R.)

MODEL LAND COMPANY
LOT 29
(P.B. 8, PAGE 40, P.B.C.R.)

MODEL LAND COMPANY
S 1/2 OF LOT 28
(P.B. 8, PAGE 40, P.B.C.R.)

MODEL LAND COMPANY
LOT 28
(P.B. 8, PAGE 40, P.B.C.R.)

MODEL LAND COMPANY
LOT 28
(P.B. 8, PAGE 40, P.B.C.R.)